



2024 Virtual Patient & Caregiver Education Conference

Saturday, July 20, 2024
11 a.m. – 4 p.m. ET

Presented by:



AT THE FOREFRONT

UChicago Medicine

Comprehensive Cancer Center

TABLE OF CONTENTS

Scroll or click on the text or logos below to navigate to sections of the booklet. To return to the Table of Contents, click the round red TOC button at the end of each section. For optimal interactive performance, view this document in Read Mode.

	WELCOME	2
	AGENDA.....	3
	ASK QUESTIONS ONLINE THROUGH SLIDO!	6
	FAST FACTS ABOUT NETS	7
	SPEAKER BIOGRAPHIES.....	8-12
	FROM OUR SPONSORS.....	14-18
	CLINICAL TRIALS.....	19
	SUPPORT NETRF	20
	A WORD OF THANKS	21

Note to Attendees

This patient and caregiver education conference is not intended as and shall not be relied upon as medical advice. The Neuroendocrine Tumor Research Foundation encourages all users to discuss any information found here with their oncologist, physician, and/or appropriate qualified health professional.

Attending this conference does not constitute a patient-physician relationship. The Neuroendocrine Tumor Research Foundation does not represent that any information provided here should supplant the reasoned, informed advice of a patient’s oncologist, physician, and/or appropriate qualified health professional.

WELCOME

Welcome to the 2024 KNOW YOUR NETs Virtual Patient and Caregiver Education Conference. It's our honor to be co-chairs for this event again this year. This is our fifth KNOW YOUR NETs virtual conference and we are proud of the series' popularity.

Thank you for helping us to shape the agenda for this year's KNOW YOUR NETs conference. Based on what you told us you wanted to learn, we have assembled a group of outstanding speakers—all experts in their fields who have graciously given their time to participate in this program.

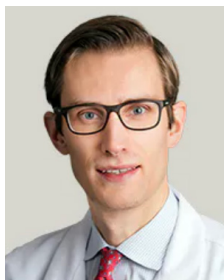
You can submit your questions for our panel through SLIDO.com, using the event code NETRF. See the instructions for SLIDO in this booklet.

NETRF is grateful for all of our conference sponsors who have helped make this event possible. Please take a moment to review the educational content from our sponsors in this booklet. If you are looking for more information, check out NETRF's [NET Knowledge Center](#).

Thank you for joining us today, supporting NETRF and, most importantly, being an active and engaged participant to help us increase awareness of neuroendocrine cancer. Your story matters and you are not alone. Together, we are committed to meeting the education needs of those with neuroendocrine cancer and their families.



**Elyse
Gellerman, MHS**
Conference Co-Chair
CEO
*NET Research
Foundation*



**Xavier
Keutgen, MD**
Conference Co-Chair
*Associate Professor
of Surgery
University of Chicago
Medicine*

AGENDA

Program times are Eastern Daylight Time.

11:00 a.m.	Welcome and Introduction Elyse Gellerman, MHS, NETRF
Hope in Action: Innovation & Discovery Through Research & Clinical Trials	
11:10 a.m.	Discovery in NETs Through Basic and Translational Research Anna Greene, PhD, NETRF Dawn Quelle, PhD, University of Iowa
11:30 a.m.	Clinical Trials/Immunotherapy in NETs Daniel Halperin, MD, MD Anderson Cancer Center
11:50 a.m.	Advances in NETs from the European Expert Perspective Jules Derks, MD, PhD, Maastricht University
12:00 p.m.	NET & NEC Thrivership Moment
Hope in Action: NET Treatments, Multidisciplinary Care & NET Tumor Board	
12:15 p.m.	Combining and Sequencing Novel Therapies in NETs Xavier Keutgen, MD, UChicago Medicine Chih-Yi "Andy" Liao, MD, UChicago Medicine Osman Ahmed, MD, UChicago Medicine
1:00 p.m.	Tumor Board Xavier Keutgen, MD, UChicago Medicine Chih-Yi "Andy" Liao, MD, UChicago Medicine Osman Ahmed, MD, UChicago Medicine Mark Lewis, MD, Intermountain Healthcare, Utah Heloisa Soares, MD, Huntsman Cancer Institute Aman Chauhan, MD, University of Miami
1:30 p.m.	NET & NEC Thrivership Moment
Break	
Hope in Action: Living Well with NETs	
1:45 p.m.	Symptom Management and Nutrition Heloisa Soares, MD, Huntsman Cancer Institute Luz Chavez, MS, RD, CSO, LDN, UChicago Medicine
2:10 p.m.	Genetics and Fertility Mark Lewis, MD, Intermountain Healthcare, Utah Feighanne Hathaway, MS, CGC, UChicago Medicine
2:35 p.m.	Thrivership and Quality of Life Jessica Thomas, LCSW, NETRF Simron Singh, MD, Sunnybrook Research Institute
3:00 p.m.	NET & NEC Thrivership Moment
3:05 p.m.	Hope in the Future of NETs
3:20 p.m.	Live Q&A
4:00 p.m.	Closing Statements Elyse Gellerman, MHS, NETRF

Program subject to change.



BECOME INFORMED, ENGAGED AND CONNECTED IN YOUR NET JOURNEY

Current and accurate patient education and information is vital to helping you live well with neuroendocrine cancer. We know that finding credible information and education can be challenging and difficult to navigate.

NETRF's NET Knowledge Center is a comprehensive resource organized to direct you to the information you need to be engaged in your neuroendocrine cancer journey while connecting you to a community of resources.

INFORMATION

Learn more about neuroendocrine cancers

A diagnosis of a neuroendocrine tumor often comes with lots of questions and concerns. These resources explain the different kinds of neuroendocrine cancers, diagnostic testing, and risks so you and your family can better understand your condition.

ENGAGEMENT

Take the next step regarding your diagnosis

With many different kinds of neuroendocrine cancers, it's important to find the best possible care and treatment. These resources explore finding specialists, treatments, and how best to care for yourself.

COMMUNITY

Connect with more people and resources about neuroendocrine cancer

When it comes to neuroendocrine tumors, it takes a community. Explore the many ways you can find out about the latest in care and research and what's happening in the neuroendocrine cancer community.



Visit the NET Knowledge Center at
netrf.org/for-patients/ or scan this QR code.

Neuroendocrine Cancer: A Guide for Patients and Families



The newly updated 80-page guide to neuroendocrine cancer is a hands-on reference for the tests, treatments, and management of gastrointestinal, pancreatic, lung, and adrenal neuroendocrine tumors. It offers a solid overview of NETs for the recently diagnosed patient, serves as a helpful reference for longer-term survivors, and gives practical tips on nutrition, diarrhea, and patient/provider communication for those at any stage of the disease.

The NETRF Patient Guide is made possible through the generous support from the Vincent E. Taylor Education Fund.

To order your copy visit,
netrf.org/for-patients/
or scan the QR code here:



ASK QUESTIONS ONLINE THROUGH SLIDO!



OPTION 1

- On your phone, tablet, or computer, open your web browser and go to www.slido.com, then select our event code: **NETRF** (screen 1)
- Click on **Live Interaction** (screen 2). That's it! You are ready to ask a question or vote a question up (screen 3). There's no need to duplicate a question.

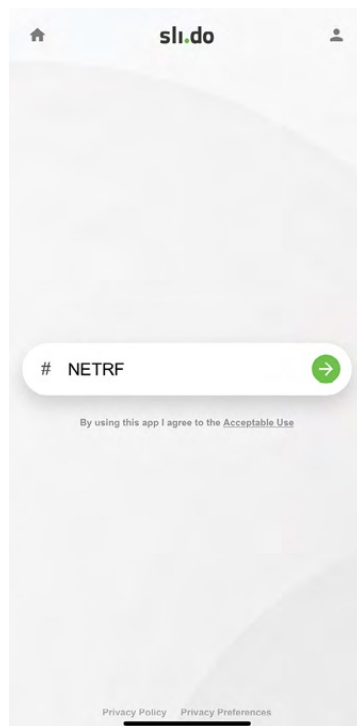
OPTION 2

- Click [this link](#) to automatically go to the Questions page.

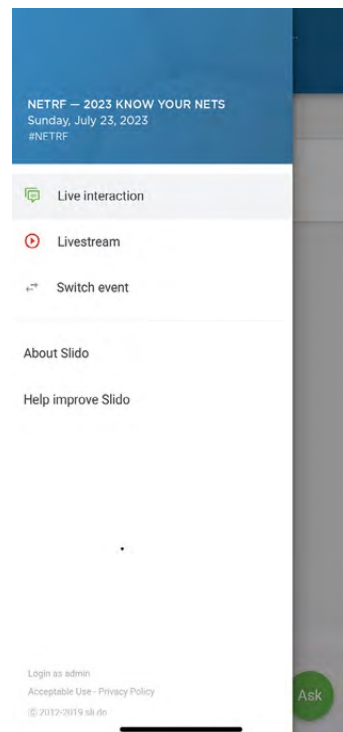
Do NOT use your name. Please ask your question anonymously or use your initials.

While we cannot guarantee your question will be addressed, questions with the highest number of votes stand a better chance of getting answered by a speaker.

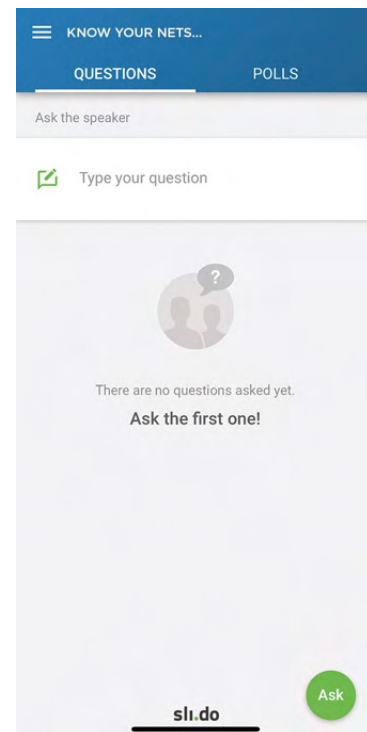
Screen 1



Screen 2



Screen 3



Fast Facts About NETs

- **175,000+ people in the U.S. are living with a NET.**
- **More than 12,000 people in the U.S. are diagnosed with a NET each year.**
- **NET incidence has increased 6.4x from 1973 to 2012.¹**
- **The average length of time from first symptoms to diagnosis is 4.3 years.²**
- **The average number of health care visits made before a NET diagnosis is 11.8 visits.²**
- **Up to 58% of patients had metastases at diagnosis.**
- **The increase in the number of people diagnosed with NETs is attributed in part to improvements in diagnostic techniques and greater awareness of NETs.**

ABOUT THE NEUROENDOCRINE TUMOR FOUNDATION (NETRF)

The Neuroendocrine Tumor Research Foundation is the largest private global funder of neuroendocrine cancer research, investing \$37.6 million in landmark research since 2005. NETRF's mission is to drive transformational discoveries in the study of neuroendocrine tumors. We are leading the fight to bring life-changing treatments to families and to find a cure.



NETRF:

- Invests boldly in the most promising scientific projects worldwide
- Funds and nurtures the most brilliant NET scientists who bring their original thinking and determined spirit to their work
- Offers hope to patients and families
- Shapes the future of neuroendocrine cancer care to save lives

NETRF's impact on the field of NET research has been profound. Thanks to NETRF-funded discoveries and the efforts of the NET medical community, the therapeutic landscape of NET management looks entirely different now than it did in 2005, when NETRF began. Such advances are not random. They are the fruit of many years of NETRF-funded research.

EDUCATING AND EMPOWERING PATIENTS

NETRF is dedicated to the thousands of patients, families, and caregivers affected by neuroendocrine cancer. We provide expert educational resources to help you understand your diagnosis, make informed health care decisions, and to help you thrive.

Our resources include:

- NET Knowledge Center, a comprehensive digital resource for information, engagement, and community resources
- Neuroendocrine Cancer Guide, a hands-on reference for the tests, treatments, and management of NETs
- NETWise Podcast series
- Extensive YouTube library with videos about diagnosis, treatment, research, and living with NETs
- Patient and caregiver education conferences
- Searchable databases of NET doctors, multidisciplinary treatment programs, and support groups

¹ Dasari A, Shen C, Halperin D, et al. Trends in the incidence, prevalence, and survival outcomes in patients with neuroendocrine tumors in the United States. *JAMA Oncol.* 2017;3(10):1335-1342.

² Singh S, Granberg D, Wolin E, et al. Patient-reported burden of a neuroendocrine tumor (NET) diagnosis: results from the first global survey of patients with NETs. *J Glob Oncol.* 2016;3(1):43-53.

SPEAKER BIOGRAPHIES



Osmanuddin Ahmed, MD

University Chicago Medicine

Dr. Ahmed is an associate professor of Radiology at UChicago Medicine and is board certified in Diagnostic and Interventional Radiology. He received his medical degree from University of Illinois at Chicago and completed a vascular and interventional radiology fellowship at Stanford Hospital.



Aman Chauhan, MD

University of Miami

Aman Chauhan, MD, earned his medical degree from the Kasturba Medical College in Manipal, Karnataka, India, followed by a dual residency in internal medicine and pediatrics at Louisiana State University in New Orleans. Dr. Chauhan completed his fellowship in hematology and oncology at the University of Kentucky, especially focusing on neuroendocrine tumor (NETs). Additionally, Dr. Chauhan completed a Cancer Therapy Evaluation Program (CTEP) physician externship at the National Cancer Institute (NCI) that focused on designing clinical trials and clinical research projects. His clinical interests include treating NETs, including carcinoid tumors, high-grade neuroendocrine carcinomas, and small and large cell neuroendocrine carcinoma. Dr. Chauhan leads the University of Miami Neuroendocrine Cancer Program and he is national principal investigator on several investigator-initiated neuroendocrine cancer theranostics clinical trials. He has authored over 80 scientific publications and book chapters and has received career development awards from the National Cancer Institute. Dr. Chauhan also serves on AJCC and ASCO NET guideline committees and is Co-Chair of NANETS communication committee.



Luz Chavez, MS, RD, CSO, LDN

University Chicago Medicine

Luz Chavez is the manager of Clinical Nutrition and Diabetes Patient Education at UChicago Medicine, where she has worked for the last 10 years. She is a certified specialist in oncology nutrition and specializes in gastrointestinal, genitourinary, and hematological cancers.

SPEAKER BIOGRAPHIES, cont.



Jules Derks, MD, PhD

Maastricht University

Dr. J.L. Derks is an early career pulmonologist with expertise in treating neuroendocrine tumors (carcinoids) and neuroendocrine cancer (LCNEC/SCLC) of the lung. He received his medical degree and finished his residency at the Maastricht University Medical Center (Maastricht, Netherlands). He is currently a fellow in thoracic oncology at the Erasmus MC (Rotterdam, Netherlands), an ENETS-expertise center with a dedicated multidisciplinary team on NETs. He finished his PhD with honors and received a Dutch-Belgium best thesis award for his research on LCNEC. Dr. Derks has a focus on translational research aiming to improve the treatment of patients with lung NET/NEC through national and European collaborative projects funded by amongst others the Dutch Cancer Society, NETRF and the Daniel Den Hoed Fund.



Elyse Gellerman, MHS

Chief Executive Officer, NETRF

Elyse has been Chief Executive Officer of the Neuroendocrine Tumor Research Foundation since November 2017. As CEO, she has built a team that has vastly expanded NETRF's global reach of research funding and patient education. Prior to NETRF, Elyse was a Regional Vice President for Sarah Cannon, the oncology service line for Hospital Corporation of America (HCA). She led an oncology program across eight hospitals in two states. Elyse also spent more than 20 years in hospital service line development, operations consulting, and marketing. She has served on regional and national boards at Susan B. Komen. In 2011, Elyse was recognized by the Obama Administration as a Champion for Change in the fight against breast cancer. Elyse has a Bachelor's Degree from Cornell University and a Master's Degree in Healthcare Systems from the University of Denver.



Anna Greene, PhD

NETRF Director of Research

As NETRF's Director of Research, Dr. Greene manages the foundation's research programs, oversees the annual grant cycle, supervises post-award processes, organizes the annual research symposium, and reports research impact and outcomes to the community. She is motivated to help advance neuroendocrine cancer research to understand the disease better and ultimately identify better treatments and cures. She earned a BS in chemistry from Berry College and a PhD in chemistry from Dartmouth College.

SPEAKER BIOGRAPHIES, cont.



Daniel Halperin, MD

MD Anderson Cancer Center

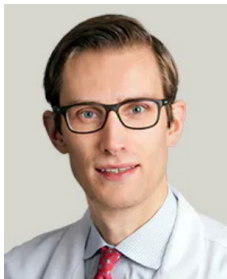
Dr. Halperin is a medical oncologist and clinical investigator primarily focused on the development of novel treatments for patients with neuroendocrine tumors (NETs). He serves as chair of the NET Multidisciplinary Conference (Tumor Board) at MD Anderson, and represents the institution on the Neuroendocrine and Adrenal Tumor guideline committee of the National Comprehensive Cancer Network (NCCN). As a clinical investigator, he leads clinical trials of new drugs for patients with NETs at MD Anderson, and works together with a team of laboratory and population scientists to understand more fully the molecular underpinnings and clinical manifestations of neuroendocrine tumors. He serves on the Board of Scientific Advisors of NETRF and the Scientific Advisory Committee of the Healing NET Foundation, as well as chairing the North American Neuroendocrine Tumor Society Scientific and Research Committee in 2021.



Feighanne Hathaway, MS, CGC

University Chicago Medicine

Feighanne Hathaway is a licensed and board-certified genetic counselor in the section of Hematology/Oncology at UChicago Medicine. Feighanne has been providing cancer genetic services for over 20 years, starting at New York University. She currently provides genetic testing and counseling in the University of Chicago Advanced and High Risk Prostate Cancer Clinic (UCHAP) as well the Hereditary Hematological Malignancy Clinic. Her research interests include genetic susceptibility to prostate cancers, hematological cancers, and rare cancers. Additionally, she is interested in making genetic services available to underrepresented and/or underserved populations and training more professionals in genetics to meet the growing demands of genetic testing. She received her Bachelor of Science in Liberal Arts and Sciences from the University of Illinois Champaign-Urbana and a Master of Science in Genetics from Sarah Lawrence College.



Xavier Keutgen, MD

University Chicago Medicine

Dr. Keutgen is a surgical oncologist with particular expertise in treating neuroendocrine, thyroid, parathyroid and adrenal tumors. He is the director of the University of Chicago Neuroendocrine Tumor Center and works closely with multidisciplinary team that specializes in NETs. Dr. Keutgen, a Belgian native, received his medical degree from the University of Heidelberg (Germany), and completed his residency at New York Presbyterian Hospital-Weill Cornell Medical Center and fellowships at the University of Zurich (Switzerland) and the National Cancer Institute (NIH).

SPEAKER BIOGRAPHIES, cont.



Mark Lewis, MD

Intermountain Healthcare

Dr. Lewis is the director of gastrointestinal oncology at Intermountain Healthcare. He received his medical degree, completed his internal medicine residency, and served as chief resident at Baylor College of Medicine in Houston, Texas. After completing a hematology/oncology fellowship at the Mayo Clinic in Rochester, Minnesota, where he served as chief fellow, he returned to Houston where he worked at The University of Texas MD Anderson Cancer Center with a dual appointment in general and gastrointestinal medical oncology before assuming his current position in 2016. Dr. Lewis is a member of the NETRF Board of Directors. He is a frequent speaker and author on topics related to neuroendocrine tumors, medical oncology, and the impact of a cancer diagnosis.



Chi-Yi (Andy) Liao, MD

University Chicago Medicine

Dr. Liao is an Assistant Professor of Medicine at UChicago Medicine. He is a medical oncologist and clinical investigator who specializes in treating gastrointestinal neuroendocrine tumors and hepatobiliary cancers. He serves as the principal investigator of many clinical trials for these cancers and is the Interim Director of University of Chicago's Gastrointestinal Oncology Program and the Co-Director of the Neuroendocrine Tumor Program.



Dawn Quelle, PhD

University of Iowa

Dr. Dawn Quelle is a Professor of Neuroscience & Pharmacology and Pathology at the University of Iowa Carver College of Medicine. She joined the faculty at the University of Iowa in 1997 and has led the Cancer Genes and Pathways Program in the Holden Comprehensive Cancer Center since 2009. Her laboratory studies druggable mechanisms of tumor pathogenesis with a focus on neuroendocrine tumors (NETs) and malignant peripheral nerve sheath tumors (MPNSTs). Her investigations are highly collaborative and benefit from the input of both basic and clinical scientists. Her research is funded by several multi-PI grants from the NIH to explore the role of an oncogenic GTPase, named RABL6A, in NETs and MPNSTs. Her findings have identified novel combination therapies that effectively suppress both cancer types in preclinical tumor models, and excitingly, sensitize tumors to immunotherapy. Dr. Quelle's team is working with clinical colleagues to translate those discoveries into new treatment options for MPNST and NET patients. She also serves as co-chair of NETRF's Board of Scientific Advisors.

SPEAKER BIOGRAPHIES, cont.



Simron Singh, MD

Sunnybrook Research Institute

Dr. Simron Singh is a medical oncologist at Odette Cancer Center, Sunnybrook Health Sciences Center in Toronto and an associate professor at the University of Toronto. He is Provincial Head for Person Centered Care at Ontario Health/Cancer Care Ontario. He has published extensively in the field of neuroendocrine cancers and holds numerous grants and leads international clinical research trials in the area. Dr. Singh is the co-head of the Commonwealth Neuroendocrine Tumour Research collaboration and serves as an officer of the board of the North American Neuroendocrine Tumor Society. He leads the neuroendocrine disease orientated group for the Canadian Clinical Trials working group, is the co-chair of the NCI/NCTN NET task force, and co-founded the Susan Leslie Clinic for Neuroendocrine Cancers at the Sunnybrook Odette Cancer Center, the first of its kind in Canada.



Heloisa Soares, MD, PhD

Huntsman Cancer Institute

Dr. Soares is a medical oncologist with a focus in gastrointestinal and neuroendocrine cancers. She is an associate professor at the Huntsman Cancer Institute (HCI) at University of Utah, where she leads the University of Utah NET Destination Care Program. Dr. Soares received her medical degree at Faculdade de Medicina do ABC in Brazil, where she was born. She completed her residency training at the Mount Sinai Medical Center of Florida and her hematology-oncology fellowship training and PhD in molecular biology at UCLA. She serves as the medical director for the Clinical Trials Office as well as the co-physician leader in the GI Clinical Trials Research Group at HCI. In 2019, she was elected as a member of the board of directors for The North American Neuroendocrine Tumor Society (NANETS) and served on the board until 2023 and now chairs the newly created NETPACT committee. Additionally, she is the co-chair for the NCI NET taskforce and is a panel member for the Neuroendocrine and Adrenal Tumors NCCN Clinical Practice Guidelines in Oncology.



Jessica Thomas, LCSW

NETRF Director of Patient Education

Jessica Thomas, LCSW, brings nearly two decades of experience as a clinical social worker specializing in helping patients and caregivers in neurology, oncology and chronic illness. Most of her professional experience is as a mental health provider in the chronic illness field. Jessica's professional passion has been to empower patients and their caregivers to explore, find and embrace their definition of "what matters most" while living with a chronic, progressive or terminal illness. She cares greatly about community, patient-centered care, research, patient experience and outcomes.



NETwise

A Podcast About Neuroendocrine Cancer

Being diagnosed with neuroendocrine cancer, an uncommon disease, can feel isolating and overwhelming. The NETWise podcast is here to help patients and caregivers navigate the world of neuroendocrine tumors and carcinomas.

Listen as the NET Research Foundation (NETRF) speaks with experts and patients who will help you to understand diagnosis, treatment, thrivership and everything in between. NETWise is for everyone, from newly diagnosed patients to longtime survivors, as well as caregivers and family members.

This is your guide to learning, listening, knowing, and being NETWise.

Check out these episodes for more on what you have heard during KNOW YOUR NETs:

- [What You Need to Know about NETs and NECs](#)
- [Managing Symptoms of NETs](#)
- [Medical Management of NETs](#)
- [Adjusting to the New Normal](#)
- [Navigating the New Normal](#)
- [NET Research – Part 1](#)
- [NET Research – Part 2](#)

Subscribe [here](#) and find our entire NETWise library. Listen to NETWise wherever you get your podcasts.



Neuroendocrine Tumor
Research Foundation
31 St. James Avenue, Suite 365
Boston, MA 02116
(617) 946-1780 | netrf.org



NEUROENDOCRINE TUMOR
RESEARCH FOUNDATION



Neuroendocrine Tumor Program



AT THE FOREFRONT

UChicago Medicine

Comprehensive Cancer Center

One of the highest volume centers in the country, the **University of Chicago Medicine Neuroendocrine Tumor (NET) Program** offers unique therapy options for even the most advanced cancers. We offer:

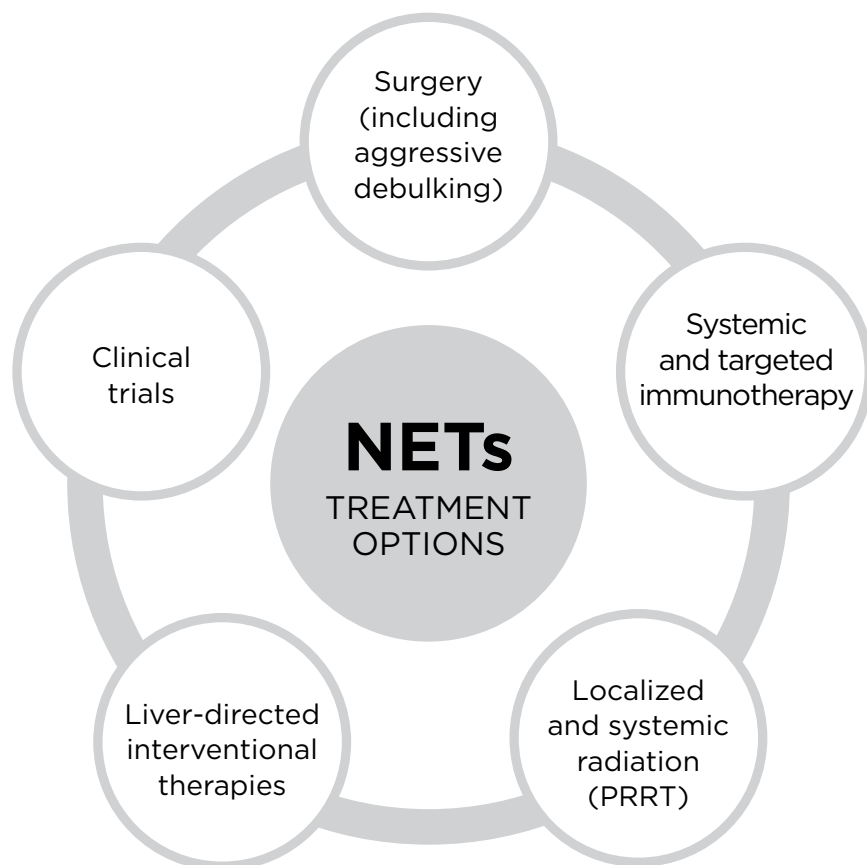


- A multidisciplinary program consisting of nationally recognized experts who specialize in diagnosing and treating all forms of NETs.
- A multidisciplinary in-person and virtual clinic that allows you to be seen by our oncologists and surgeons at the same time.
- A dedicated NET nurse navigator to guide you through the program and facilitate your treatment plan in collaboration between specialists.
- The most advanced surgical techniques, including minimally invasive/robotic procedures and complex approaches to remove and destroy NETs that have spread to the liver.
- Leading-edge technologies like precision-enhancing navigation-controlled ablation of liver tumors and Peptide Receptor Radionuclide Therapy (PRRT), a systemic, targeted approach that delivers radiation to NET cells without damaging other organs.
- The only medical cyclotron in the region for creating novel radiotracers for NETs, which helps create next-generation PRRT treatments in-house.
- Molecular profiling of NETs allowing for a personalized approach using therapies that work best on your tumor.
- One of the most experienced genetic counseling programs in the country to treat patients with NETs linked to hereditary conditions.
- Researchers conducting the latest studies on NETs, both in the laboratory and the clinic.



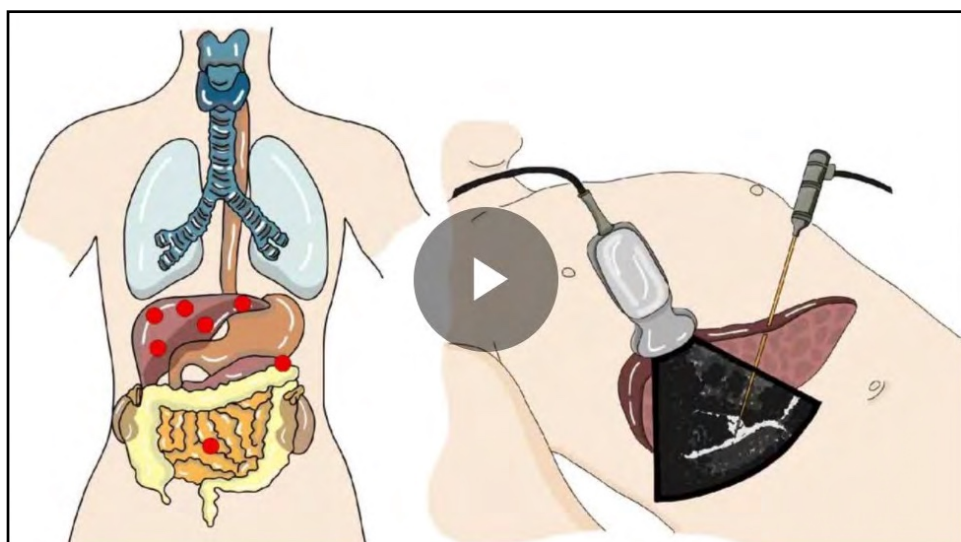
Our Multidisciplinary Neuroendocrine Tumor Board meets regularly to discuss complex cases.

We offer a large spectrum of treatment options for our Neuroendocrine Tumors patients.



Understanding Neuroendocrine Tumors

Visit UChicagoMedicine.org/NETs to watch video



Research areas of focus and impact



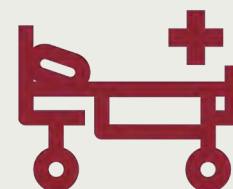
Population research



Translational research



Cancer genetics and immunotherapy



New treatments, early phase clinical trials



AT THE FOREFRONT

UChicagoMedicine

Comprehensive Cancer Center

Recognized as an NCI Designated Comprehensive Cancer Center



An official cancer center designation by the [National Cancer Institute \(NCI\)](#) is the highest federal rating a cancer center can achieve. It's the gold standard for cancer programs and is bestowed upon the nation's top cancer centers in recognition of their innovative research and

leading-edge treatments. UChicago Medicine has had this prestigious designation for nearly 50 years.

In addition to this NCI designation, UChicago Medicine is also recognized for the comprehensive nature of our research, care, education and community outreach programs. We are one of only two institutions in the state of Illinois — and 51 in the United States — to be recognized as a comprehensive cancer center.

Meet the Neuroendocrine Tumors Team



Xavier Keutgen, MD
Endocrine Surgery



Chih-Yi Liao, MD
*Hematology and
Oncology (Cancer)*



Blase Polite, MD
*Hematology and
Oncology (Cancer)*



Daniel Appelbaum, MD
Nuclear Medicine



Osmanuddin Ahmed, MD
*Vascular and
Interventional
Radiology*



Namrata Setia, MD
Pathology

Get a Second Opinion

Seeking the opinion of an expert can ease your mind and help you feel more secure in the decisions you are making. At UChicago Medicine, we offer both on-site and remote second opinions. In addition to recommending standard therapies, our physicians may also offer innovative treatment options not widely available at most hospitals, including clinical trials that may be right for you.

**To learn more, call
1-855-702-8222
or visit
UChicagoMedicine.org/cancer-appointment.**



Our dedicated nurse navigator will guide you through the program and facilitate your treatment plan in collaboration with our multidisciplinary team.

**To make an appointment, call 800-824-0200
or email NETS@uchospitals.edu**

- ▶ Have you been diagnosed by a physician with neuroendocrine tumors that have spread beyond the site of origin?
- ▶ Do you experience symptoms of carcinoid syndrome (e.g. watery diarrhea and/or cutaneous flushing episodes)?
- ▶ Are you interested in playing a role in helping potential new treatments become available to other patients like yourself?

If you are interested in participating in an online, anonymous survey about your symptoms, please contact **Simon Howe** at showe@magnoliainnovation.com



Any interaction with Magnolia Innovation is voluntary and contact should be made directly with Simon.

7/2024 | NP-PAT-0013

Thank You To Our Sponsors



Crinetics is proud to sponsor the NETRF Know Your NETs 2024 Virtual Education Conference.

ABOUT CRINETICS

At Crinetics Pharmaceuticals, our singular focus is on transforming the lives of patients living with endocrinology-related conditions. Our goal is to discover, develop, and commercialize novel therapeutics that leverage our unique understanding of endocrinology and G-protein coupled receptors (GPCRs).

Endocrinology impacts nearly every aspect of human health, and our passion for this work runs deep. Our novel molecules that have been purposefully designed by our world-class, in-house R&D team have the potential to lift the burden of disease across a wide range of endocrine diseases and endocrine-related tumors so that patients can focus on life.

[Learn about Crinetics work in Carcinoid Syndrome](#)

07.2024 | NP-PAT-0013



Attacking Cancers with Radiopharmaceutical Medicines

 rayzebio.com

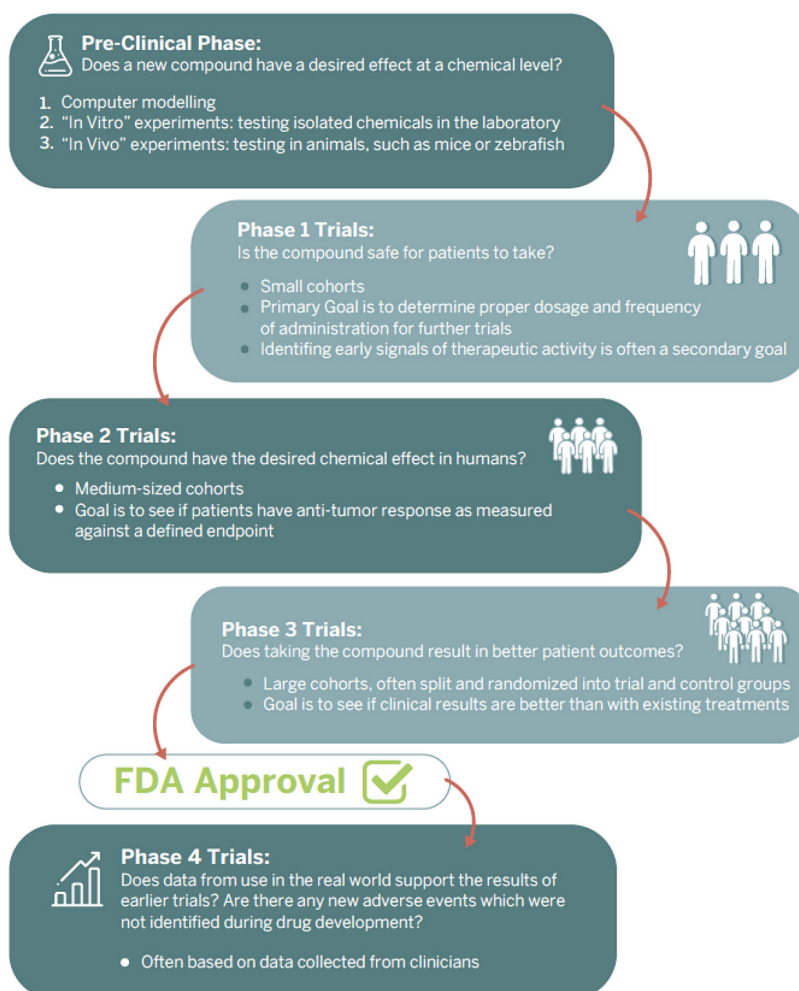
 linkedin.com/company/rayzebio

CLINICAL TRIALS

Clinical trials can provide patients with innovative treatments and are the final step in a long process that begins with research in a lab. Before any new treatment is used in people in clinical trials, researchers work for many years in the lab to understand its effects by testing it first on cells or in animals. They then work to determine the best dose for treatment, the side effects the drug may cause, and how the effectiveness of the drug compares to current treatments. It can take 10–15 years to develop a new drug to the point of a first clinical trial.

Phases of Clinical Trials

Clinical trials occur in phases. Once a new treatment is successful in one phase, it may proceed to the next phase.



FIND A CLINICAL TRIAL

There are many clinical trials for neuroendocrine cancer. Scan this QR code to access the NET Trial Finder, or visit netrf.org/for-patients/trial-finder/

THANK YOU...

...FOR DRIVING BREAKTHROUGH NEUROENDOCRINE CANCER DISCOVERIES FOR TREATMENTS AND CURES.

NETRF invests boldly in the most promising neuroendocrine cancer research worldwide. More often than not, NETRF is the **first or only funding source for NET scientists. We have funded two and half times more NET investigators than the NIH.** Thanks to your support, NETRF is empowering scientists with the resources to push the boundaries of discovery.

Join Us!

- Renew your Annual Gift
- Become a Monthly Donor
- Make a Tribute Gift
- Establish a Bequest or Planned Gift
- Host an Event or Online Fundraiser
- Double Your Impact with a Corporate Match
- Make a Gift via a Donor Advised Fund
- Donate Stock and Bonds
- Make a Gift from an IRA Account
- Become a Corporate Sponsor

To make your gift today,
please visit netrf.org/give-now.
Every gift matters. Thank you!



A WORD OF THANKS

Thank you for taking part in NETRF's 2024 KNOW YOUR NETs Virtual Patient and Caregiver Education Conference. We hope you found the sessions informative and valuable.

If you have any questions about NETRF, our research and resources, and how we can best support you on your journey with neuroendocrine cancer, please contact us at info@netrf.org.

We are grateful to our generous partners and friends like you. Thanks to your support NETRF can host educational conferences and advance research, opening new doors to NET discoveries.

NETRF greatly appreciates the generosity of the following sponsors who made this educational program possible. Thank you!



Visit our YOUTUBE channel for patient education videos.



Connect with us and other patients, caregivers, and family members online:

