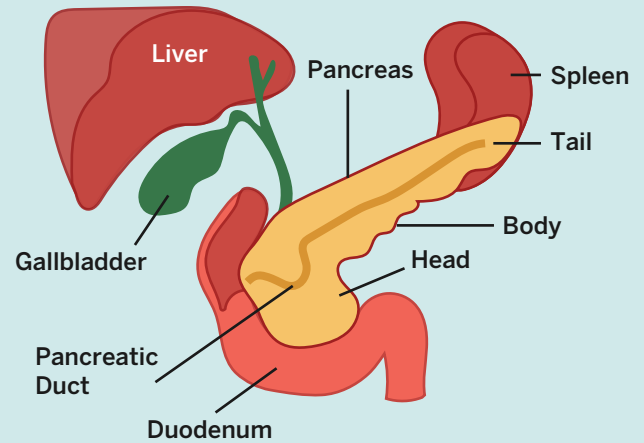
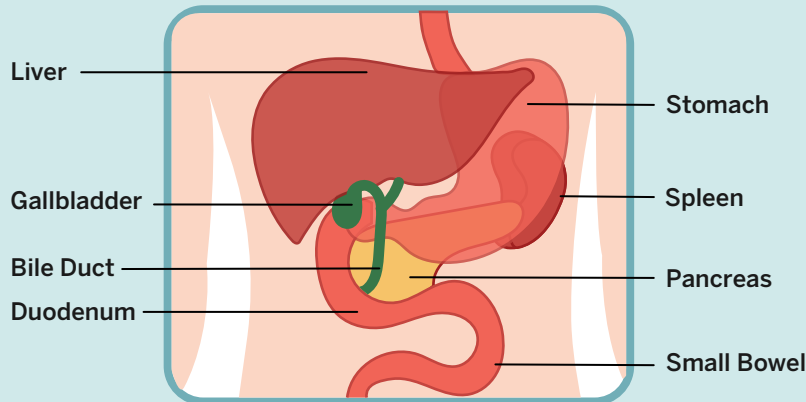
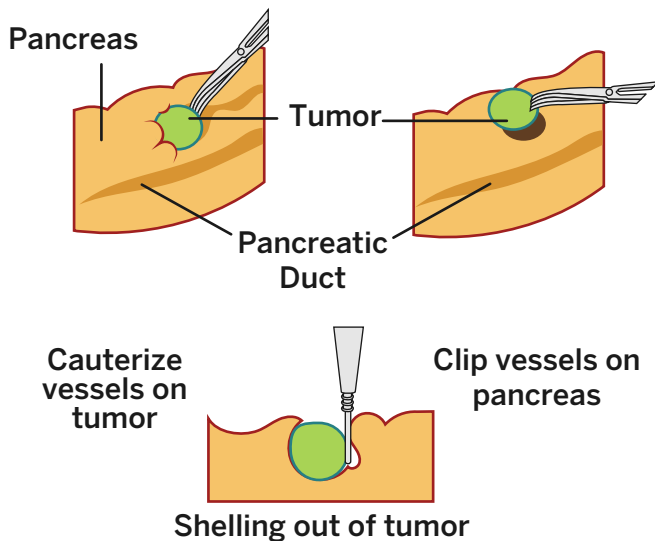


## NET Surgeries in the Pancreas



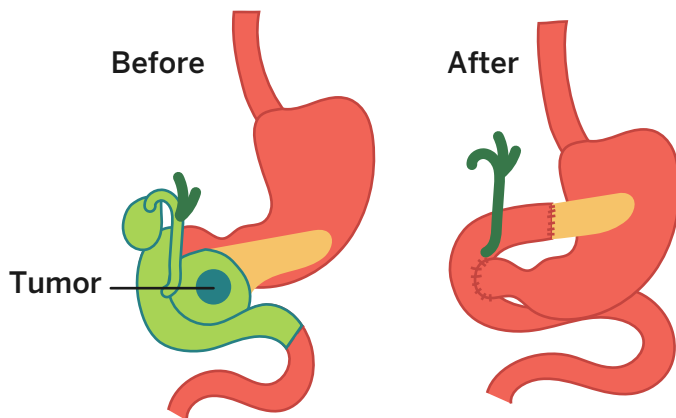
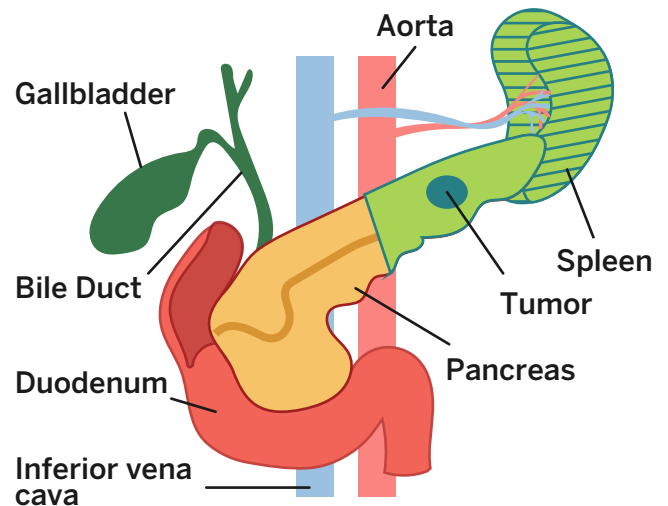
### Enucleation

Removes ONLY the tumor itself



### Distal Pancreatectomy

Removes the tail and/or body of the pancreas (and sometimes also the spleen with lymph nodes)



### Pancreatoduodenectomy ("Whipple Procedure")

Removes the head of the pancreas, the gallbladder, nearby lymph nodes, and parts of the stomach, small intestine, and bile duct. The remaining parts of these organs are then reconnected in a new way.